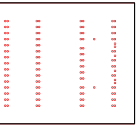


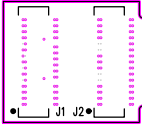
P/N 126Y-1766568 REV A  
10-29-09  
LAYOUT BY I-3 TECHNOLOGIES

LAYER 1-TOP

SILKSCREEN-TOP

HOLES



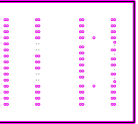


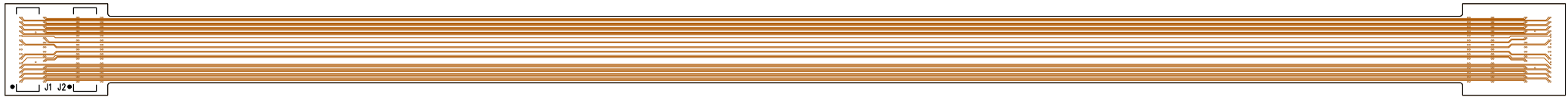
P/N 126Y-1766568 REV A  
10-29-09  
LAYOUT BY I-3 TECHNOLOGIES

LAYER 2-AGND PLANE

SILKSCREEN-TOP

HOLES



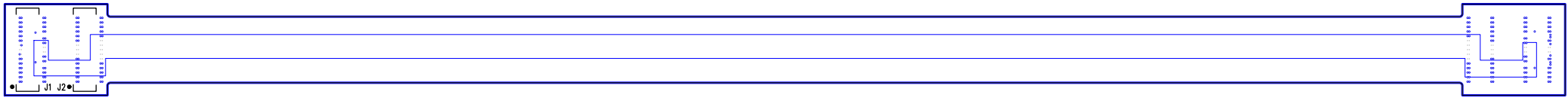


P/N 126Y-1766568 REV A  
10-29-09  
LAYOUT BY I-3 TECHNOLOGIES

LAYER 3-SIGNALS

SILKSCREEN-TOP

HOLES



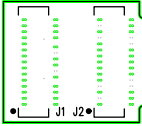
P/N 126Y-1766568 REV A  
10-29-09  
LAYOUT BY I-3 TECHNOLOGIES LAYER 4-PWR PLANE

SILKSCREEN-TOP  
HOLES



P/N 126Y-1766568 REV A  
10-29-09  
LAYOUT BY I-3 TECHNOLOGIES

LAYER 5-SIGNALS    SILKSCREEN-TOP  
HOLES



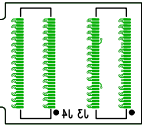
P/N 126Y-1766568 REV A  
10-29-09  
LAYOUT BY I-3 TECHNOLOGIES

LAYER 6-DGND PLANE

SILKSCREEN-TOP

HOLES





P/N 126Y-1766568 REV A  
10-29-09  
LAYOUT BY I-3 TECHNOLOGIES

LAYER 7-BOTTOM

SILKSCREEN-BOT  
HOLES

LAYOUT BY I-3 TECHNOLOGIES  
10-23-03  
P\N 128Y-1288288 REV A

LAYER 2-BOTTOM

SILKSCREEN-BOT  
HOLE2

